

EMMA Tutorial



Using EMMA Connect – Entering an event

What is EMMA Connect?

EMMA Connect is a full-featured application that allows you to submit your photos for club nights and salons (EMMA clubs only) over the internet.

EMMA Connect is launched by clicking a link on a web page. The link downloads, caches and runs the application. A shortcut will be created on your desktop so that you can run it just like any other application without having to go to your browser.

The correct version of the Java platform is automatically downloaded and installed as necessary based on the application's needs and the your environment.

Why EMMA Connect?

The main reasons are to make the photo submission process easier and dynamic. Your photos will be validated as you add them (before they get sent to the server), so there will be no more frustrating email processes and wasting of bandwidth and time.

How to enter an event

You will receive an email containing your membership number and password. It will also have an web site link to the program. The email will have the following wording:

Hi John Silver.

Welcome to EMMA Connect Internet-Based Entry Application for West Rand Photographic Club.

Please go to the following link to download EMMA Connect: http://www.emmazone.co.za/index.php?option=com_content&view=article&id=11&Itemid=23

Your login details are as follows:
Membership nr: 99090099
Password: NAIpRePf

This is a beta version of the software and your input would be greatly appreciated. If you have any suggestions regarding EMMA Connect, please e-mail them to support@emmazone.co.za. Thank you for your help in testing EMMA Connect 1.0 Beta.

Club related queries can be sent to: wrcpcentries@icon.co.za

Regards,
West Rand Photographic Club Admin.

This is a computer generated message. Please do not reply.

You need to click on the link:

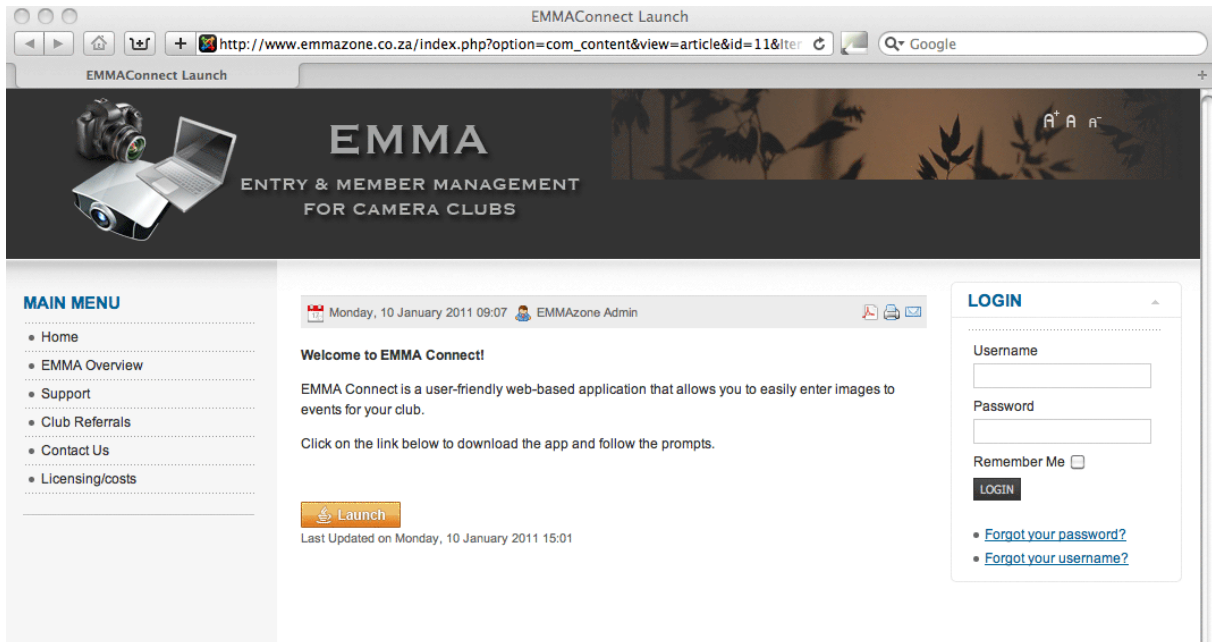
http://www.emmazone.co.za/index.php?option=com_content&view=article&id=11&Itemid=23

EMMA Tutorial



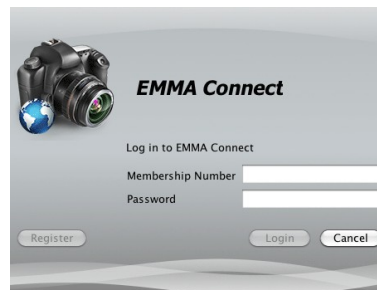
Using EMMA Connect – Entering an event

This will take you to the Emma Connect site (at www.emmazon.co.za).

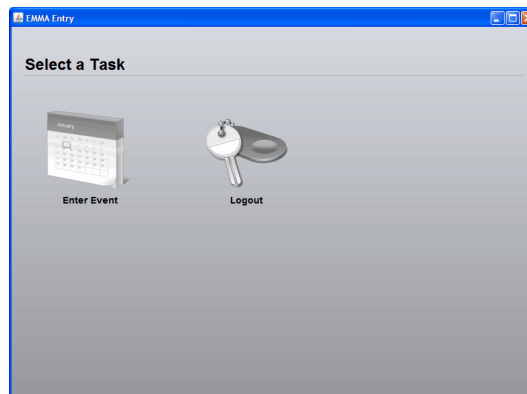


Click on the **Launch** button and after the installation is done, the login screen will appear.

Type in the membership number and paste and copy the password from the email and click on the **Login** button. The EMMA Connect home page will appear.



Click on the **Enter Event** button and a list of all the valid events will appear.

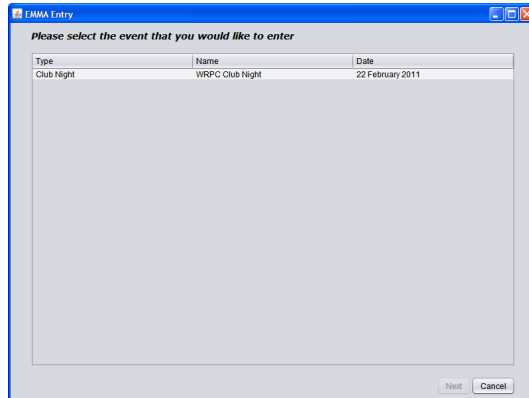


EMMA Tutorial

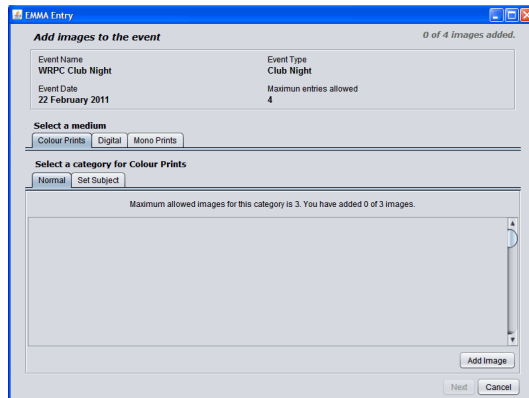


Using EMMA Connect – Entering an event

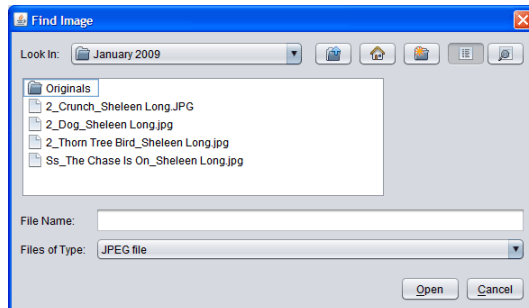
Select the event and then click on the **Next** button or double-click on the event. The submission screen will appear.



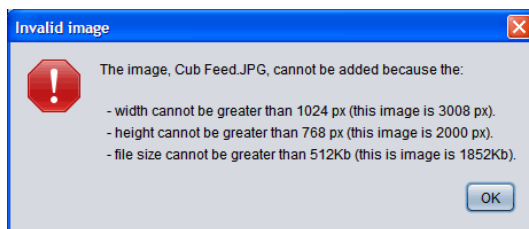
Select a medium and category by clicking on the appropriate tabs and then click on the **Add Image** button.



You can now browse through your folders to where your photos are stored. Select a photo and click on the **Open** button.



If you select a photo which is the wrong size you will get an error. You will not be allowed to select a photo until it has the right dimensions.



EMMA Tutorial



Using EMMA Connect – Entering an event

Once you have selected all your photos, you will be able to rename them. You do not have to add your membership number or the category onto the name. You cannot use ‘_’ in the name.

If you want to submit a print, then select the appropriate tabs and click on the **Add Image** button and a text box will appear. Type in the title and click on the **Next** button.

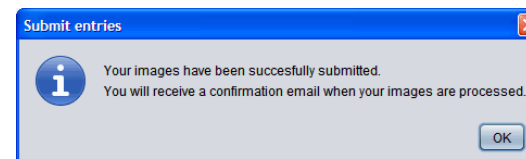
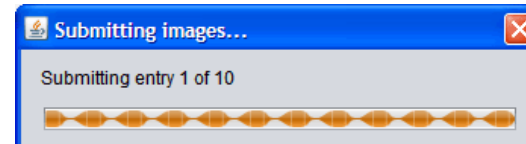
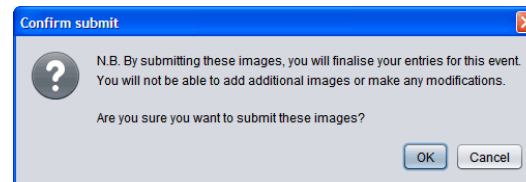
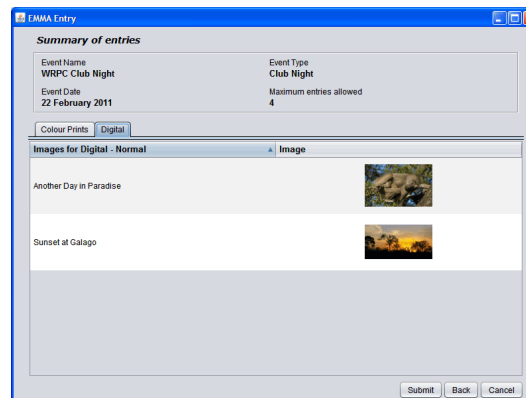
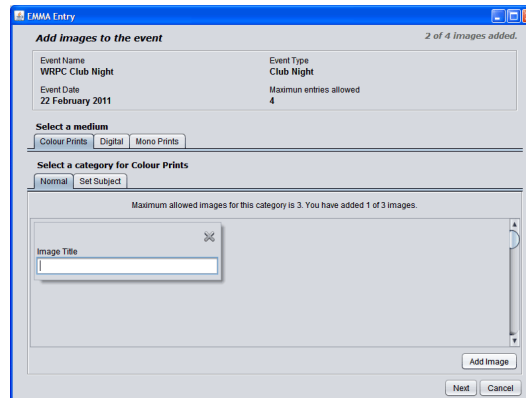
A list of your titles will appear.

Once all your entries have been added and they are all named correctly, click the **Submit** button.

Currently, you cannot resubmit if you have made a mistake, so make sure everything is correct before submitting.

If you are sure then click on the **OK** button. The following message will appear.

And that's it !!!



EMMA Tutorial



Using EMMA Connect – Entering an event

Finally, click on the **Logout** button. A shortcut will have been added to your desktop, so that next time you can launch the program from your desktop, without having to go to the web site.